

PHANTOM MERMAID ASTROLOGY

# Venus Signs, Houses, & More!

Where You Could Meet Your Romantic Partner

BY AJ SHARP



# Table of Contents

**Part 1** (p.4)

Venus Through the Elements

**Part 2** (p.6)

Venus Signs

**Part 3** (p.9)

Venus in the Houses

**Part 4** (p.15)

Understanding Synastry:  
Venus Element Connections

**Part 5** (p.24)

Putting it Together: Interpretations

**Part 6** (p.30)

BONUS!

# Unlock Your Venus Power

Are you tired of feeling disconnected from your authentic relationship style? Frustrated by trying to follow generic love advice that doesn't quite fit? You're not alone.

The truth is, understanding relationships isn't one-size-fits-all. Your Venus placement by element, sign, and house reveals your unique blueprint for love, value, and connection. But trying to piece together this cosmic puzzle can feel overwhelming.

## That's where this guide comes in. Inside, you'll discover:

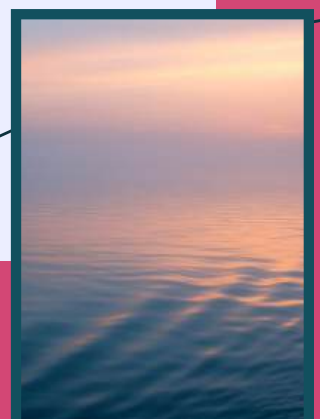
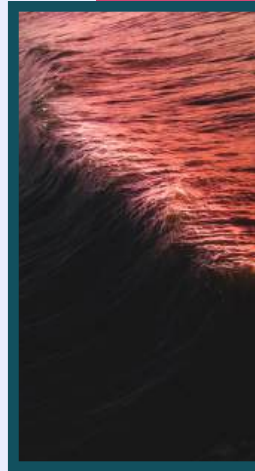
- A clear breakdown of Venus through the elements (Fire, Earth, Air, Water) revealing your core relationship style
- Detailed Venus sign descriptions that illuminate how you naturally give and receive love
- House placements that show WHERE these relationship patterns play out in your life
- Element connections that explain how different Venus placements interact and create chemistry
- Practical interpretations to help you put it all together
- Bonus insights and practices to enhance your Venus energy

Stop trying to force yourself into relationship advice that doesn't honor your unique Venus placement. This guide will help you understand and embrace your natural way of connecting, so you can create more authentic and fulfilling relationships.

Let's discover your Venus power together.

*AJ Sharp -*

*Phantom Mermaid Astrology*



# VENUS THROUGH THE ELEMENTS

## FIRE VENUS

### (ARIES, LEO, SAGITTARIUS)

- Brings passionate, dynamic energy to relationships.
- You need freedom to express yourself and pursue what excites you.
- You thrive on spontaneity and grand romantic gestures.
- Your love style is bold, direct, and filled with enthusiasm.

## EARTH VENUS

### (TAURUS, VIRGO, CAPRICORN)

- Values tangible expressions of love and commitment.
- You seek security and practical demonstrations of affection.
- Your approach to relationships is grounded, reliable, and focused on building something lasting.
- You appreciate quality time and physical comfort.

## AIR VENUS

### (GEMINI, LIBRA, AQUARIUS)

- Prioritizes intellectual connection and communication in relationships.
- You need mental stimulation and variety in how you express and receive love.
- Your relationships often involve deep conversations, shared ideas, and social activities.

## WATER VENUS

### (CANCER, SCORPIO, PISCES)

- Creates deep emotional bonds and intuitive connections.
- You experience love intensely and seek soul-deep understanding with partners.
- Your relationships are characterized by emotional nurturing, empathy, and profound spiritual connection.



# VENUS IN THE SIGNS

## ARIES VENUS

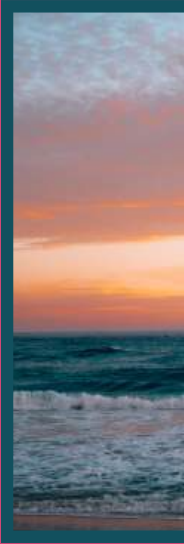
- Passionate and direct in matters of the heart, you pursue love with boundless enthusiasm and fierce determination.
- Your approach to relationships is characterized by a bold, energetic spirit that makes you an exciting and dynamic partner.
- When you're interested in someone, there's no mistaking your intentions, you go after what you want with characteristic Aries confidence and zeal.

## TAURUS VENUS

- Sensual and loyal, you value stability and comfort in relationships.
- As an earth sign ruled by Venus itself, you approach love with a grounded patience and deep appreciation for life's physical pleasures.
- Your romantic nature seeks lasting connections built on trust, shared values, and material security.
- When you care for someone, you show it through thoughtful gestures and unwavering dedication.

## GEMINI VENUS

- Curious and communicative, you seek intellectual stimulation and variety in your relationships.
- Your quick wit and adaptable nature draws you to partners who can keep up with your diverse interests and engaging conversations.
- You thrive on mental connection and need the freedom to explore multiple facets of life with someone equally versatile.



# VENUS IN THE SIGNS

## CANCER VENUS

- Nurturing and empathetic, you crave emotional security and homey connections.
- Your sensitive nature creates deep bonds through caring gestures and protective instincts.
- You excel at creating comfortable spaces where love can flourish, and you value partners who understand the importance of emotional safety and domestic harmony.

## LEO VENUS

- Dramatic and generous, you thrive in relationships that offer admiration and excitement.
- Your warm-hearted nature and natural flair for romance make you a magnetic partner.
- You express love through grand gestures and creative displays of affection, seeking relationships where mutual appreciation and passionate dedication can shine.

## VIRGO VENUS

- Practical and devoted, you value service and reliability in love.
- Your attention to detail shows in thoughtful acts of kindness and consistent support.
- You express affection through helpful gestures and careful consideration of your partner's needs, creating relationships built on mutual respect and dependability.



# VENUS IN THE SIGNS

## LIBRA VENUS

- Harmonious and sociable, you seek balanced and aesthetically pleasing relationships.
- Your diplomatic nature helps create partnerships based on fairness and mutual understanding.
- You have a natural talent for creating beauty in your relationships, whether through shared cultural experiences or elegant expressions of affection.

## SCORPIO VENUS

- Intense and mysterious, you desire deep emotional bonds and transformative connections.
- Your passionate nature seeks relationships that go beyond surface-level attraction to touch the soul.
- You value profound intimacy and unwavering loyalty, creating powerful bonds that can weather any storm.

## SAGITTARIUS VENUS

- Adventurous and optimistic, you are drawn to freedom-loving and philosophical partners.
- Your enthusiastic spirit seeks relationships that expand your horizons and challenge your perspectives.
- You value honest communication and shared exploration, whether physical or intellectual.



# VENUS IN THE SIGNS

## CAPRICORN VENUS

- Ambitious and disciplined, you look for commitment and long-term potential in relationships.
- Your practical approach to love focuses on building stable foundations for the future.
- You value partners who share your drive for success and appreciate the importance of tradition and responsibility.

## AQUARIUS VENUS

- Independent and unconventional, you value individuality and intellectual engagement in relationships.
- Your innovative approach to love often breaks traditional molds, seeking partnerships that allow for personal freedom and unique expression.
- You appreciate partners who can match your visionary thinking and respect your need for space.

## PISCES VENUS

- Compassionate and dreamy, you seek spiritual and creative connections in love.
- Your romantic nature easily merges with another's emotional world, creating deep bonds through shared imagination and empathy.
- You value partners who can navigate both the practical and mystical aspects of life together.



# VENUS IN THE HOUSES

## VENUS 1ST HOUSE

- You possess a natural and magnetic charm that effortlessly draws others into your orbit.
- Love and beauty are not just preferences but fundamental aspects of your core identity, shaping how you present yourself to the world and interact with others.
- Your authentic self-expression serves as a powerful attractant, and you may find that meaningful partnerships naturally develop through personal pursuits, individual interests, or in environments where you feel most comfortable being yourself.
- Your presence often creates an immediate impression, and your approach to relationships tends to be direct and personally invested.
- Look for partners in spaces where you feel most authentic.

## VENUS 2ND HOUSE

- Financial stability and material well-being play a significant role in shaping your approach to relationships and love.
- Your values around security and comfort influence how you connect with potential partners.
- You might find meaningful connections through shared financial endeavors, activities centered around nature and the physical world, or even while pursuing entrepreneurial ventures and side projects.
- Your appreciation for life's tangible pleasures often attracts those who share similar values around material security and earthly comforts.
- You might connect through financial endeavors or nature-related activities.





# VENUS IN THE HOUSES

## VENUS 3RD HOUSE

- Effective communication and the vibrant exchange of ideas form the foundation of your romantic connections.
- Your relationships flourish through intellectual stimulation and diverse forms of expression.
- You may discover romantic possibilities while engaging in community activities, exploring local gathering spots, or through connections made via siblings or close neighbors.
- The way you communicate and share thoughts with others often serves as a catalyst for deeper romantic bonds.
- Local events, community gatherings, and intellectual discussions could lead to meaningful connections.

## VENUS 4TH HOUSE

- Family dynamics and domestic life serve as powerful influences in your romantic journey.
- Your connection to home, heritage, and emotional security deeply impacts your relationship choices.
- You might find meaningful partnerships through family connections, perhaps rekindling a connection with someone from your early years, or meeting someone whose family values and traditions harmoniously align with your own.
- Your desire for emotional safety and domestic harmony often draws you to partners who understand and respect the importance of creating a nurturing home environment.
- You may meet partners through family connections or shared domestic interests.



# VENUS IN THE HOUSES

## VENUS 5TH HOUSE

- Love for you is characterized by playfulness, creativity, and joyful self-expression.
- Romantic experiences often blossom naturally while engaging in artistic pursuits, recreational activities, or as you explore new hobbies and interests.
- Your magnetic charm shines brightest in environments that allow your natural enthusiasm and creative spirit to flourish.
- You might find meaningful connections through artistic communities, entertainment venues, or while pursuing activities that bring you genuine joy and pleasure.
- Artistic activities and recreational pursuits could lead to romantic connections.

## VENUS 6TH HOUSE

- You appreciate practical and supportive connections that enhance your daily life and well-being.
- Partners often enter your life through work-related activities, health and wellness pursuits, or service-oriented endeavors.
- These connections might develop at your workplace, during exercise classes, at the gym, or through shared routines and responsibilities.
- You value relationships that contribute to personal growth and mutual support in everyday matters.
- Work environments or wellness activities might bring romantic opportunities.



# VENUS IN THE HOUSES

## VENUS 7TH HOUSE

- Partnerships play a crucial role in shaping your identity and personal growth journey.
- You might find that the partners you attract naturally complement and enhance your personality, offering perspectives that help you evolve and grow.
- These meaningful connections often develop through close friends, social gatherings, or while engaging with nature and the arts.
- Your relationships tend to mirror important aspects of yourself, creating opportunities for deep self-discovery and mutual understanding.
- Look for partners who enhance your personality and share your appreciation for art and beauty.

## VENUS 8TH HOUSE

- You are drawn to intense and transformative relationships that touch the depths of your soul.
- These powerful encounters may arise in environments that foster emotional intimacy, through shared financial or business ventures, or in spaces dedicated to healing and personal transformation.
- Your connections often catalyze profound changes in both partners, leading to deeper self-awareness and emotional growth.
- You value partnerships that aren't afraid to explore life's mysteries and complexities together.
- Deep, intimate settings or healing spaces might foster meaningful connections.



# VENUS IN THE HOUSES

## VENUS 9TH HOUSE

- You are naturally drawn to partners who embody a spirit of adventure and deep philosophical thought.
- Your romantic journey can flourish during travels abroad, higher education pursuits, or while engaging in spiritual and academic activities.
- The excitement of exploring new horizons together, whether physical or intellectual, creates powerful bonds.
- You might find yourself particularly attracted to someone from a different cultural background, as their worldview and traditions enrich your own perspective.
- These connections often begin through shared interests in personal growth, spiritual exploration, or educational pursuits.
- Travel, education, or spiritual pursuits could lead to significant relationships.

## VENUS 10TH HOUSE

- Your professional life and public image interweave seamlessly with your romantic experiences.
- Meaningful connections often develop in professional environments, industry conferences, or high-profile social gatherings where your achievements and reputation shine.
- You might encounter potential partners through career networking events, professional development workshops, or even through modern platforms like dating apps where your accomplishments and ambitions are prominently featured.
- These relationships tend to support and enhance your professional goals while satisfying your desire for public recognition.



# VENUS IN THE HOUSES

## VENUS 11TH HOUSE

- The foundation of your romantic life is built upon friendship networks and social connections.
- Love often blossoms naturally through group activities, shared humanitarian causes, or collective interests that bring like-minded people together.
- You may discover profound connections while participating in community events, joining social clubs, or engaging in volunteer work that aligns with your values.
- These relationships typically start as friendships and gradually evolve into deeper bonds, supported by shared ideals and collective aspirations.
- Group activities and shared causes could spark romance.

## VENUS 12TH HOUSE

- Your approach to love is deeply influenced by spiritual and private connections that transcend ordinary experience.
- You often encounter significant partners in settings that foster inner peace and spiritual growth, such as meditation retreats, healing centers, or places of worship.
- These relationships tend to have a mystical quality, developing in private spaces where you feel safe to explore your deepest emotions and spiritual nature.
- The connections you form here often help you understand yourself on a profound level, creating bonds that feel destined or karmic in nature.
- You might find love in settings that foster inner peace and spiritual growth.

# UNDERSTANDING VENUS SYNASTRY

When two people's Venus signs interact harmoniously or create tension, they illuminate crucial patterns about relationship dynamics, emotional resonance, and core values.

These planetary connections offer deep insights into how partners naturally express and receive love, what they fundamentally value in relationships, and how their different approaches to romance and pleasure might blend together.

Understanding these Venus-to-Venus interactions can reveal both the natural flow and potential growth areas in any partnership.

Let's explore how different Venus placements interact based on element.

# FIRE VENUS CONNECTIONS (ARIES, LEO, SAGITTARIUS)

## FIRE VENUS WITH FIRE VENUS

- Creates passionate, dynamic partnerships characterized by spontaneous expression, adventurous spirit, and boundless creative energy.
- These connections often spark intense chemistry and mutual inspiration, leading to relationships that are both exciting and transformative.
- The natural enthusiasm and zest for life that Fire Venus brings helps maintain a vibrant, ever-evolving dynamic between partners.

## FIRE VENUS WITH EARTH VENUS

- These relationships create a fascinating balance of stability and vitality, where Earth's grounding influence helps channel Fire's passionate energy in productive ways.
- While Earth provides the practical foundation and patient dedication needed for lasting connections,
- Fire keeps the spark of excitement alive through spontaneous expressions of love and adventure.
- This combination often results in relationships that are both secure and dynamic, allowing both partners to grow while maintaining a stable core.

# FIRE VENUS CONNECTIONS (ARIES, LEO, SAGITTARIUS)

## FIRE VENUS WITH AIR VENUS

- Creates intellectually stimulating connections characterized by vibrant social energy and shared adventures.
- These partnerships thrive on mental exploration, spontaneous activities, and discovering new experiences together.
- The natural affinity between Fire and Air elements leads to dynamic relationships full of engaging conversations, creative pursuits, and mutual encouragement to explore life's possibilities.

## FIRE VENUS WITH WATER VENUS

- Creates an intense emotional fusion where Fire's passionate energy combines with Water's deep emotional currents.
- This pairing produces a dynamic and transformative relationship filled with both expressive passion and profound emotional understanding.
- While Fire brings spontaneous warmth and enthusiastic expression, Water adds emotional depth and intuitive connection, resulting in a partnership that can be both healing and energizing.

# EARTH VENUS CONNECTIONS (TAURUS, VIRGO, CAPRICORN)

## EARTH VENUS WITH EARTH VENUS

- Creates deeply grounded and enduring relationships centered around shared core values and practical life goals.
- These partnerships thrive on mutual dedication to building something meaningful together, whether that's a home, family, or joint ventures.
- The natural affinity between Earth signs fosters a powerful foundation of trust, reliability, and material security, allowing both partners to feel stable and supported in pursuing their aspirations.

## EARTH VENUS WITH FIRE VENUS

- A grounding yet dynamic connection where Earth's stable nature provides a strong foundation while Fire's passionate energy motivates growth and expansion.
- Earth's practical wisdom helps channel Fire's enthusiastic drive into tangible achievements, while Fire's warmth and spontaneity encourages Earth to embrace more adventurous expressions of love.
- This combination creates a balanced partnership where security and excitement harmoniously coexist.

# EARTH VENUS CONNECTIONS (TAURUS, VIRGO, CAPRICORN)

## EARTH VENUS WITH AIR VENUS

- Creates a fascinating dynamic where Earth's practical nature adds tangible structure to Air's intellectual and social pursuits.
- This combination often results in meaningful discussions that lead to concrete actions and sustainable plans.
- Earth's grounding influence helps transform Air's innovative ideas into reality, while Air's mental agility introduces fresh perspectives to Earth's methodical approach. They create partnerships that balance thoughtful analysis with practical implementation.

## EARTH VENUS WITH WATER VENUS

- Creates a harmonious blend of emotional depth and material stability, where Earth's practical nature provides a secure foundation for Water's emotional fluidity.
- This combination often results in partnerships that masterfully balance financial security with emotional nurturing.
- Earth's steadfast dedication to building lasting comfort complements Water's intuitive understanding of emotional needs, creating a safe haven where both partners can fully express their care.

# AIR VENUS CONNECTIONS (GEMINI, LIBRA, AQUARIUS)

## AIR VENUS WITH AIR VENUS

- Creates intellectually stimulating partnerships filled with engaging conversations and diverse social interactions.
- These connections thrive on mental exploration, shared interests, and the exchange of ideas.
- Both partners appreciate variety in their activities and communication styles, leading to dynamic relationships that stay fresh through constant learning and discovery.
- Their natural affinity for intellectual pursuits helps maintain strong mental bonds while their social nature encourages growth.

## AIR VENUS WITH FIRE VENUS

- Creates dynamic partnerships full of enthusiasm and innovative energy.
- These connections thrive on spontaneous exchanges of ideas, passionate intellectual discourse, and an ever-flowing stream of creative inspiration.
- Fire's natural warmth and expressiveness combines beautifully with Air's mental agility, leading to stimulating conversations that spark new perspectives and exciting possibilities.
- This pairing often results in relationships that maintain their vibrancy through constant exploration and shared intellectual adventures.

# AIR VENUS CONNECTIONS (GEMINI, LIBRA, AQUARIUS)

## AIR VENUS WITH EARTH VENUS

- Creates a practical and grounding partnership where Air's intellectual ideas find concrete form through Earth's methodical approach.
- Earth's steady nature provides the structure and patience needed to transform Air's innovative concepts into reality, while maintaining focus on tangible outcomes and measurable progress.
- This combination excels at bridging the gap between theory and practice, allowing both partners to see their shared visions materialize through careful planning and dedicated effort.

## AIR VENUS WITH WATER VENUS

- Creates an intriguing blend of intellectual and emotional connection, where Air's mental agility combines with Water's intuitive depth.
- This pairing often results in relationships that masterfully balance analytical discourse with emotional understanding.
- Air's gift for communication helps articulate Water's deep feelings, while Water's emotional intelligence adds meaningful depth to Air's intellectual pursuits.
- Together they create partnerships that nourish both the mind and heart through thoughtful dialogue and empathetic connection.

# WATER VENUS CONNECTIONS (CANCER, SCORPIO, PISCES)

## WATER VENUS WITH WATER VENUS

- Creates powerful emotional bonds characterized by deep intuitive understanding and profound empathy.
- These partnerships naturally flow with emotional currents, allowing both individuals to explore the depths of their feelings while maintaining a safe, nurturing space for vulnerability.
- This connection often manifests as a deeply healing and transformative relationship where both individuals feel truly seen and understood at a soul level.

## WATER VENUS WITH FIRE VENUS

- Creates a dynamic fusion where Water's emotional depths ignite Fire's passionate spirit, leading to powerful transformative experiences.
- This combination excels at translating deep emotional understanding into inspired creative expression and meaningful action.
- While Water provides intuitive guidance and emotional wisdom, Fire's enthusiastic energy helps manifest these insights through bold, heart-centered initiatives.

# WATER VENUS CONNECTIONS (CANCER, SCORPIO, PISCES)

## WATER VENUS WITH EARTH VENUS

- Creates a deeply nurturing bond where Water's emotional intuition combines with Earth's steadfast practicality to form a secure and supportive partnership.
- Earth's grounding presence provides the stable foundation needed for Water's emotional depths to safely unfold, while Water's intuitive nature helps Earth connect more deeply with their feelings.
- This combination excels at creating lasting emotional security through tangible expressions of care, resulting in relationships that feel both emotionally fulfilling and materially stable.

## WATER VENUS WITH AIR VENUS

- Creates an intriguing balance where Water's emotional depths meet Air's intellectual curiosity.
- This combination often produces partnerships that excel at processing feelings through thoughtful dialogue and analysis.
- Water's intuitive wisdom helps Air develop deeper emotional awareness, while Air's gift for communication helps articulate complex feelings clearly.
- Together they create relationships that nurture both emotional understanding and mental growth.

**\*EXAMPLE PAGE\***

# Putting It All Together: Your Placements

## **VENUS SIGN:**

Pisces Venus

---

## **VENUS SIGN DEFINITION:**

Compassionate and dreamy, you seek spiritual and creative connections in love. Your romantic nature easily merges with another's emotional world, creating deep bonds through shared imagination and empathy.

You value partners who can navigate both the practical and mystical aspects of life together.

## **VENUS HOUSE:**

My Venus is in my 10<sup>th</sup> house

---

## **VENUS HOUSE DEFINITION:**

Your professional life and public image interweave seamlessly with your romantic experiences.

Meaningful connections often develop in professional environments, industry conferences, or high-profile social gatherings where your achievements and reputation shine.

You might encounter potential partners through career networking events, professional development workshops, or even through modern platforms like dating apps where your accomplishments and ambitions are prominently featured. These relationships tend to support and enhance your professional goals while satisfying your desire for public recognition.



# Putting It All Together: Your Placements

**VENUS SIGN:**

---

**VENUS SIGN DEFINITION:**

---

---

---

---

**VENUS HOUSE:**

---

**VENUS HOUSE DEFINITION:**

---

---

---

---

---

---

---



**\*EXAMPLE PAGE\***

# Putting It All Together: Partner's Placements

## **VENUS SIGN:**

Virgo Venus

---

## **VENUS SIGN DEFINITION:**

Practical and devoted, you value service and reliability in love. Your attention to detail shows in thoughtful acts of kindness and consistent support. You express affection through helpful gestures and careful consideration of your partner's needs, creating relationships built on mutual respect and dependability.

## **VENUS HOUSE:**

His Venus is in his 7<sup>th</sup> house

---

## **VENUS HOUSE DEFINITION:**

Partnerships play a crucial role in shaping your identity and personal growth journey. You might find that the partners you attract naturally complement and enhance your personality, offering perspectives that help you evolve and grow. These meaningful connections often develop through close friends, social gatherings, or while engaging with nature and the arts. Your relationships tend to mirror important aspects of yourself, creating opportunities for deep self-discovery and mutual understanding. Look for partners who enhance your personality and share your appreciation for art and beauty.



# Putting It All Together: Partner's Placements

**VENUS SIGN:**

---

**VENUS SIGN DEFINITION:**

---

---

---

---

**VENUS HOUSE:**

---

**VENUS HOUSE DEFINITION:**

---

---

---

---

---

---

---



\*EXAMPLE PAGE\*

# Putting It All Together: Synastry Through The Elements

## YOUR VENUS SIGN ELEMENT:

Water Venus

---

## YOUR VENUS ELEMENT TRAITS:

Creates deep emotional bonds and intuitive connections.  
You experience love intensely and seek soul-deep understanding with partners.  
Your relationships are characterized by emotional nurturing, empathy, and profound spiritual connection.

## PARTNER'S VENUS ELEMENT:

Earth Venus

---

## PARTNER'S VENUS ELEMENT TRAITS:

Values tangible expressions of love and commitment.  
You seek security and practical demonstrations of affection.  
Your approach to relationships is grounded, reliable, and focused on building something lasting.  
You appreciate quality time and physical comfort.

## YOUR VENUS ELEMENT & PARTNER'S VENUS ELEMENT:

Creates a deeply nurturing bond where Water's emotional intuition combines with Earth's steadfast practicality to form a secure and supportive partnership. Earth's grounding presence provides the stable foundation needed for Water's emotional depths to safely unfold, while Water's intuitive nature helps Earth connect more deeply with their feelings. This combination excels at creating lasting emotional security through tangible expressions of care, resulting in relationships that feel both emotionally fulfilling and materially stable.

# Putting It All Together: Synastry Through The Elements

**YOUR VENUS SIGN ELEMENT:**

---

**YOUR VENUS ELEMENT TRAITS:**

---

---

---

---

**PARTNER'S VENUS ELEMENT:**

---

**PARTNER'S VENUS ELEMENT TRAITS:**

---

---

---

---

**YOUR VENUS ELEMENT &  
PARTNER'S VENUS ELEMENT:**



# BONUS!

## DAILY AFFIRMATIONS FOR EACH VENUS SIGN

### ARIES VENUS

*"I embrace my passionate nature and confidently pursue what I desire."*

### TAURUS VENUS

*"I attract lasting love through my grounded presence and loyalty."*

### GEMINI VENUS

*"I connect through playful curiosity and engaging conversation."*

### CANCER VENUS

*"I nurture deep emotional bonds with an open heart."*

### LEO VENUS

*"I radiate warmth and inspire others with my creative spirit."*

### VIRGO VENUS

*"I express love through thoughtful actions and dedication."*

### LIBRA VENUS

*"I create harmony and balance in all my relationships."*

### SCORPIO VENUS

*"I embrace transformation through deep, meaningful connections."*

### SAGITTARIUS VENUS

*"I attract love through my adventurous spirit and wisdom."*

### CAPRICORN VENUS

*"I build lasting foundations for love and partnership."*

### AQUARIUS VENUS

*"I attract unique connections that celebrate my authenticity."*

### PISCES VENUS

*"I open myself to transcendent love and spiritual connection."*

WANT TO TAKE IT EVEN FURTHER? LOOK  
NO FURTHER THAN:

# The AstroLove Guide

**FOR JUST \$11!**



The AstroLove Guide helps you decode your unique love style through your birth chart. You'll explore your 7th house to understand the kind of relationships and partners you're drawn to, and your 5th house to reveal your dating vibe and ideal romantic experiences. With insights into the planets in both houses, you'll get a clearer picture of how love shows up for you and what you're really looking for.

[START DECODING TODAY!](#)